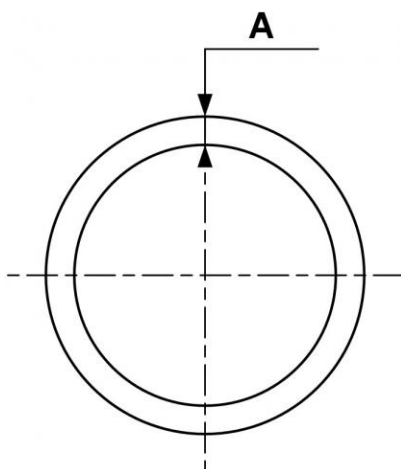


PVR TU - Tubo rigido PVC



<u>Ø est. (mm)</u> 25	<u>Lung. (m)</u> 4	<u>Pressione mas. di utilizzo</u> 13 bar a 23°C 7 bar a 50°C	<u>Depressione</u> -0.98 bar (vuoto 98%)
<u>Temperatura</u> -20°C a +50°C	<u>Materiale</u> Tubo e raccordi: PVC	<u>Conforme alle normative</u> PED REACH	

Descrizione		
Riferimento	Ø est. (mm)	Lung. (m)
PVR BTU2540	25	4
PVR BTU3240	32	4
PVR BTU4040	40	4
PVR BTU5040	50	4
PVR BTU6340	63	4



Dimensions

Riferimento

PVR BTU2540

PVR BTU3240

PVR BTU4040

PVR BTU5040

PVR BTU6340