

Gomito maschio 90°, girevole cilindrico - RPC MG



Filettatura maschio

BSPP

G 1/8

Per tubo Ø est. (mm)

4

Pressione di

utilizzo

0 a 10 bar

Temperatura

0°C a + 60°C

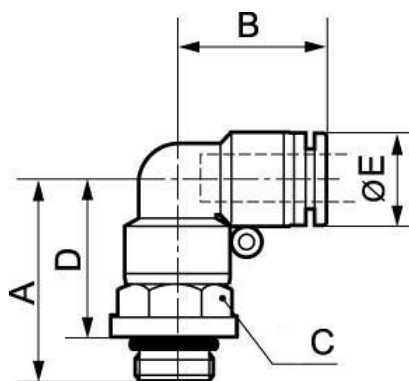
Materiale

Polimero e ottone nichelato

Descrizione

| Riferimento | Filettatura maschio BSPP | Per tubo Ø est. (mm) |
|-------------------|--------------------------|----------------------|
| RPC MG0400 | G 1/8 | 4 |
| RPC MG0401 | G 1/4 | 4 |
| RPC MG0500 | G 1/8 | 5 |
| RPC MG0501 | G 1/4 | 5 |
| RPC MG0502 | G 3/8 | 5 |
| RPC MG0503 | G 1/2 | 5 |
| RPC MG0600 | G 1/8 | 6 |
| RPC MG0601 | G 1/4 | 6 |

| Riferimento | Filettatura maschio BSPP | Per tubo Ø est. (mm) |
|-------------------|--------------------------|----------------------|
| RPC MG0602 | G 3/8 | 6 |
| RPC MG0603 | G 1/2 | 6 |
| RPC MG0800 | G 1/8 | 8 |
| RPC MG0801 | G 1/4 | 8 |
| RPC MG0802 | G 3/8 | 8 |
| RPC MG0803 | G 1/2 | 8 |
| RPC MG1000 | G 1/8 | 10 |
| RPC MG1001 | G 1/4 | 10 |
| RPC MG1002 | G 3/8 | 10 |
| RPC MG1003 | G 1/2 | 10 |
| RPC MG1201 | G 1/4 | 12 |
| RPC MG1202 | G 3/8 | 12 |
| RPC MG1203 | G 1/2 | 12 |
| RPC MG1402 | G 3/8 | 14 |
| RPC MG1403 | G 1/2 | 14 |
| RPC MG1602 | G 3/8 | 16 |
| RPC MG1603 | G 1/2 | 16 |



Dimensions

| Riferimento | A mm | B mm | C mm | D mm | E mm |
|-------------------|------|------|------|------|------|
| RPC MG0400 | 24.1 | 17.5 | 12 | 18.6 | 10 |
| RPC MG0401 | 24.7 | 17.5 | 14 | 18.7 | 10 |
| RPC MG0500 | 27 | 20.5 | 12 | 21.5 | 12.8 |
| RPC MG0501 | 27.5 | 20.5 | 14 | 21.5 | 12.8 |
| RPC MG0502 | 29 | 20.5 | 17 | 22.5 | 12.8 |
| RPC MG0503 | 30 | 20.5 | 21 | 22 | 12.8 |
| RPC MG0600 | 27 | 20.5 | 12 | 21.5 | 12.8 |
| RPC MG0601 | 27.5 | 20.5 | 14 | 21.5 | 12.8 |
| RPC MG0602 | 29 | 20.5 | 17 | 22.5 | 12.8 |
| RPC MG0603 | 30 | 20.5 | 21 | 22 | 12.8 |
| RPC MG0800 | 29.2 | 22.5 | 14 | 23.7 | 13.8 |
| RPC MG0801 | 29.2 | 22.5 | 14 | 23.2 | 13.8 |
| RPC MG0802 | 30.7 | 22.5 | 17 | 24.2 | 13.8 |
| RPC MG0803 | 31.7 | 22.5 | 21 | 23.7 | 13.8 |
| RPC MG1000 | 33.7 | 26.3 | 17 | 28.2 | 16.8 |

| Riferimento | A mm | B mm | C mm | D mm | E mm |
|-------------------|------|------|------|------|------|
| RPC MG1001 | 34.2 | 26.3 | 17 | 28.2 | 16.8 |
| RPC MG1002 | 34.2 | 26.3 | 17 | 27.7 | 16.8 |
| RPC MG1003 | 35.2 | 26.3 | 21 | 27.2 | 16.8 |
| RPC MG1201 | 35 | 27.8 | 19 | 29 | 19.8 |
| RPC MG1202 | 34.5 | 27.8 | 19 | 28 | 19.8 |
| RPC MG1203 | 36 | 27.8 | 21 | 28 | 19.8 |
| RPC MG1402 | 38.2 | 29.8 | 22 | 31.7 | 22.7 |
| RPC MG1403 | 37.2 | 29.8 | 24 | 29.2 | 22.7 |
| RPC MG1602 | 41.5 | 30.8 | 24 | 34.9 | 23.8 |
| RPC MG1603 | 39 | 30.8 | 24 | 31 | 23.8 |