

## Raccordo dritto femmina cilindrico - RPD FG



### Filettatura femmina

**BSPP**

G 1/8

### Per tubo Ø est. (mm)

4

### Pressione di utilizzo

0 a 10 bar

### Temperatura

0°C a + 60°C

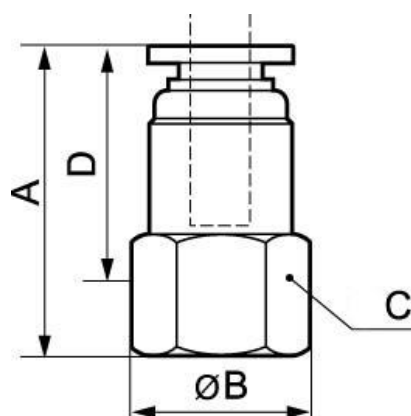
### Materiale

Polimero e ottone nichelato

## Descrizione

Riferimento	Filettatura femmina BSPP	Per tubo Ø est. (mm)
<b>RPD FG0400</b>	G 1/8	4
<b>RPD FG0401</b>	G 1/4	4
<b>RPD FG0500</b>	G 1/8	5
<b>RPD FG0501</b>	G 1/4	5
<b>RPD FG0502</b>	G 3/8	5
<b>RPD FG0503</b>	G 1/2	5

Riferimento	Filettatura femmina BSPP	Per tubo Ø est. (mm)
RPD FG0600	G 1/8	6
RPD FG0601	G 1/4	6
RPD FG0602	G 3/8	6
RPD FG0603	G 1/2	6
RPD FG0800	G 1/8	8
RPD FG0801	G 1/4	8
RPD FG0802	G 3/8	8
RPD FG0803	G 1/2	8
RPD FG1000	G 1/8	10
RPD FG1001	G 1/4	10
RPD FG1002	G 3/8	10
RPD FG1003	G 1/2	10
RPD FG1201	G 1/4	12
RPD FG1202	G 3/8	12
RPD FG1203	G 1/2	12
RPD FG1402	G 3/8	14
RPD FG1403	G 1/2	14
RPD FG1602	G 3/8	16
RPD FG1603	G 1/2	16



### Dimensions

Riferimento	A mm	B mm	C mm	D mm
RPD FG0400	24	16.5	14	14
RPD FG0401	26.5	20	17	19
RPD FG0500	27	16.5	14	20
RPD FG0501	26	20	17	18.5
RPD FG0502	28.5	22	19	20.5
RPD FG0503	31	28	24	21
RPD FG0600	27	16.5	14	20
RPD FG0601	26	20	17	18.5
RPD FG0602	28.5	22	19	20.5
RPD FG0603	31	28	24	21
RPD FG0800	28	20	17	21
RPD FG0801	28	20	17	20.5
RPD FG0802	28.5	22	19	20.5
RPD FG0803	31	28	24	21
RPD FG1000	29.5	22	19	22.5

Riferimento	A mm	B mm	C mm	D mm
RPD FG1001	29.5	22	19	22
RPD FG1002	32	24.5	21	24
RPD FG1003	32	28	24	22
RPD FG1201	31.5	24.5	21	24
RPD FG1202	33	24.5	21	25
RPD FG1203	33	28	24	23
RPD FG1402	31.3	28	24	23.3
RPD FG1403	32	28	24	22
RPD FG1602	34	28	24	26
RPD FG1603	35	28	24	25